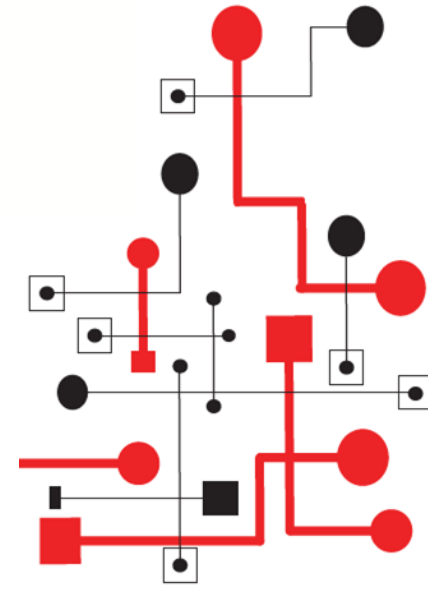


# Expo **ANTAD** & **Alimentaria**

**MÉXICO 2019**

INTERNATIONAL BUSINESS NETWORK

5·6·7 March



Associative Structure

107 Retail Chains

55,030 Stores

28,666 Million of Square Meters

868,238 Employees



33 Retail Chains	10% 5,565 Stores	48% 418,187 Employees
	52% 14,951 sqm <sup>2</sup>	

15 Retail Chains	4% 2,428 Stores	26% 221,850 Employees
	22% 6,420 sqm	

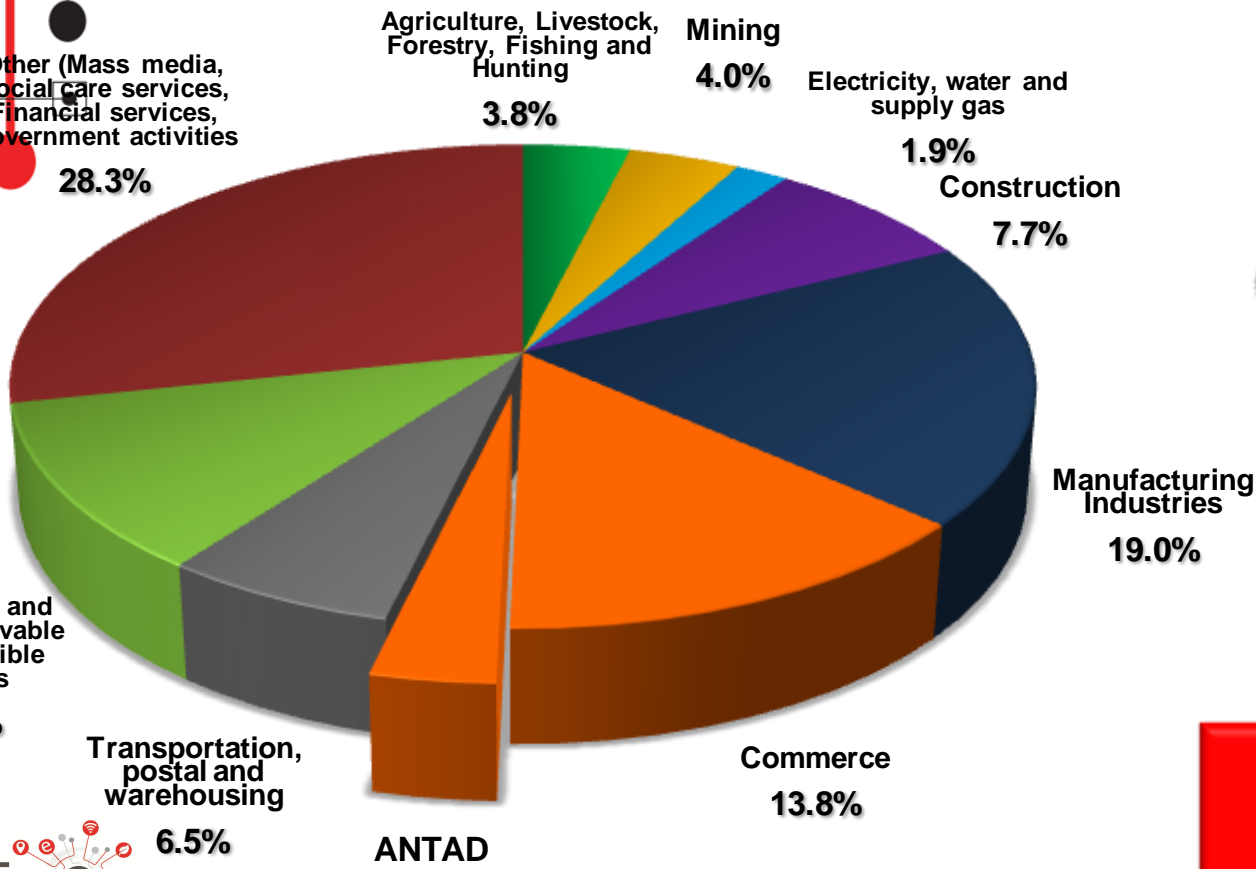
59 Retail Chains	86% 47,037 Stores	26% 228,201 Employees
	26% 7,295 sqm <sup>2</sup>	



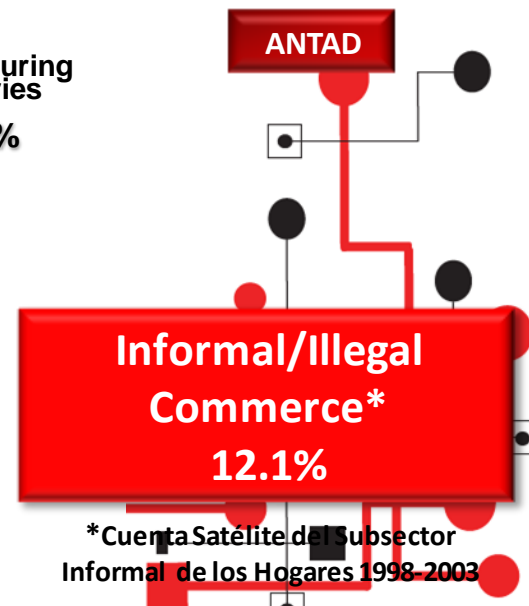
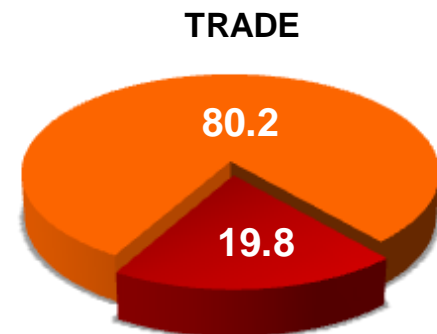
# Gross Domestic Product 2016 ANTAD Participation



**GDP: \$18.2 Billones**



**Commerce Share 17.2%**



\*Cuenta Satélite del Subsector Informal de los Hogares 1998-2003

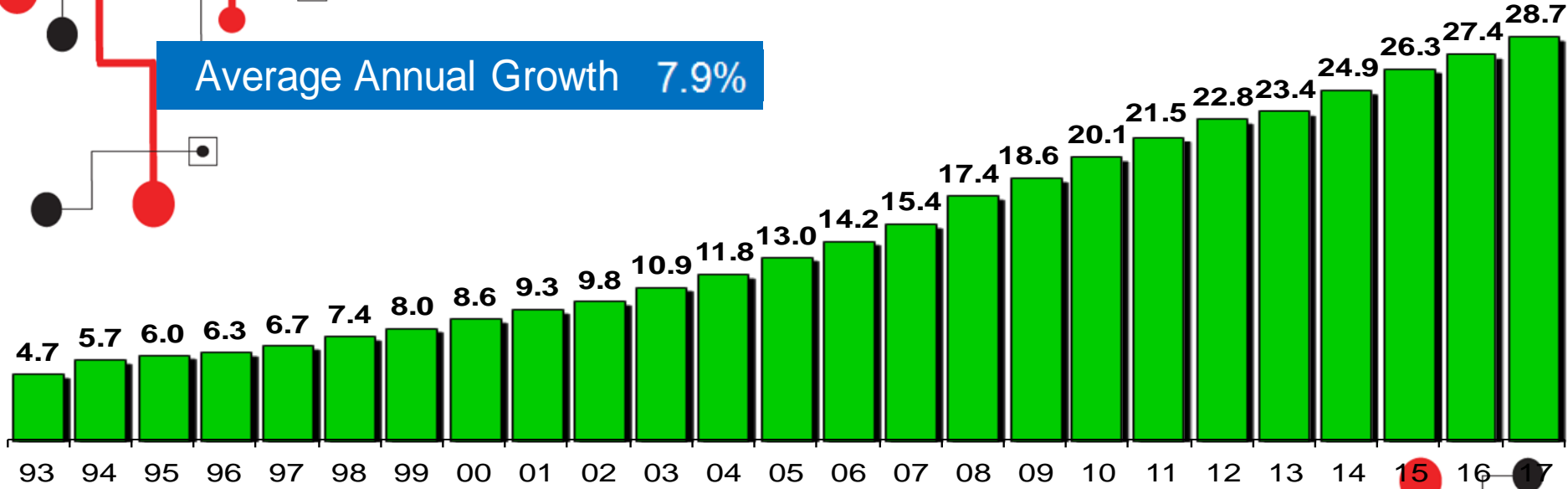


Note: ANTAD's participation was adjusted due to the base change and new GDP weights 2008.

# ANTAD Total Growth Sales Floor - Million of Square Meters

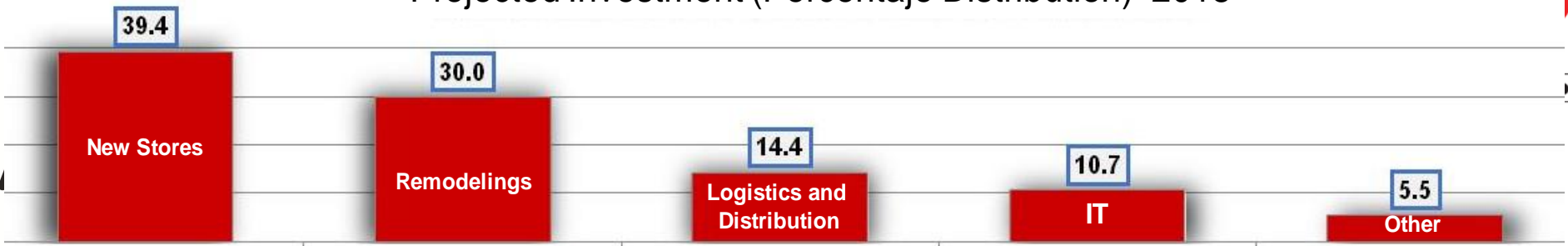


Average Annual Growth 7.9%



Investment 2017: \$ 2,800 Million dollars  
 Investment 2018: \$ 3,100 Million dollars

## Projected Investment (Porcentaje Distribución) 2018



# ANTAD Sales by CategoryProduct

## Nominal Sales Growth February 2018



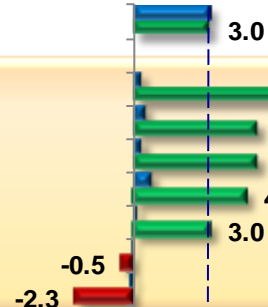
Total Stores

**SUPERMARKET**

3.5

GENERAL INDEX

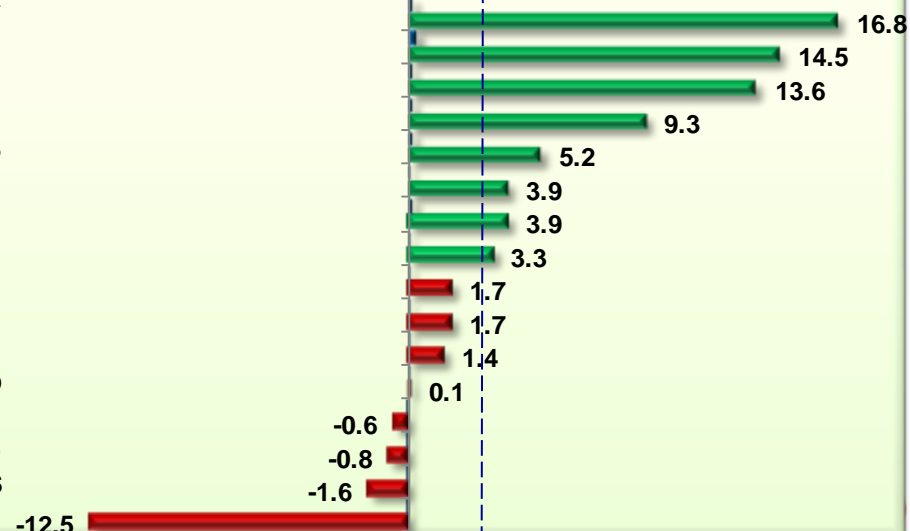
- FRUITS AND VEGETABLES
- OTHER PERISHABLES
- NON EDIBLE GROCERIES
- OTHER EDIBLE GROCERIES
- NON ALCOHOLIC BEVERAGES
- MEAT, FISH AND POULTRY
- ALCOHOLIC BEVERAGES



**GENERAL MERCHANDISE**

3.7

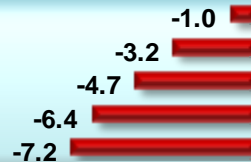
- STATIONERY
- CELL PHONES
- COMPUTING
- FURNITURE
- OTHERS
- RX PHARMACY
- GENERAL MERCHANDISE
- OTC PHARMACY
- HEALTH AND BEAUTY
- KITCHEN AND LAUNDRY
- SMALL APPLIANCES
- ELECTRONICS AND VIDEO
- HARDWARE
- PREPAID TIME (CELL PHONES)
- TOYS
- SPORTS ARTICLES



**CLOTHING AND FOOTWEAR**

-2.0

- WOMAN'S CLOTHING
- FOOTWARE
- MEN'S CLOTHING
- BABY'S CLOTHING
- CHILDREN'S CLOTHING



■ Incidence ■ Growth



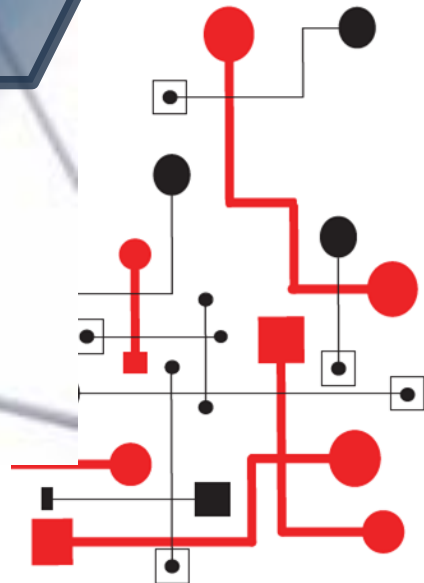
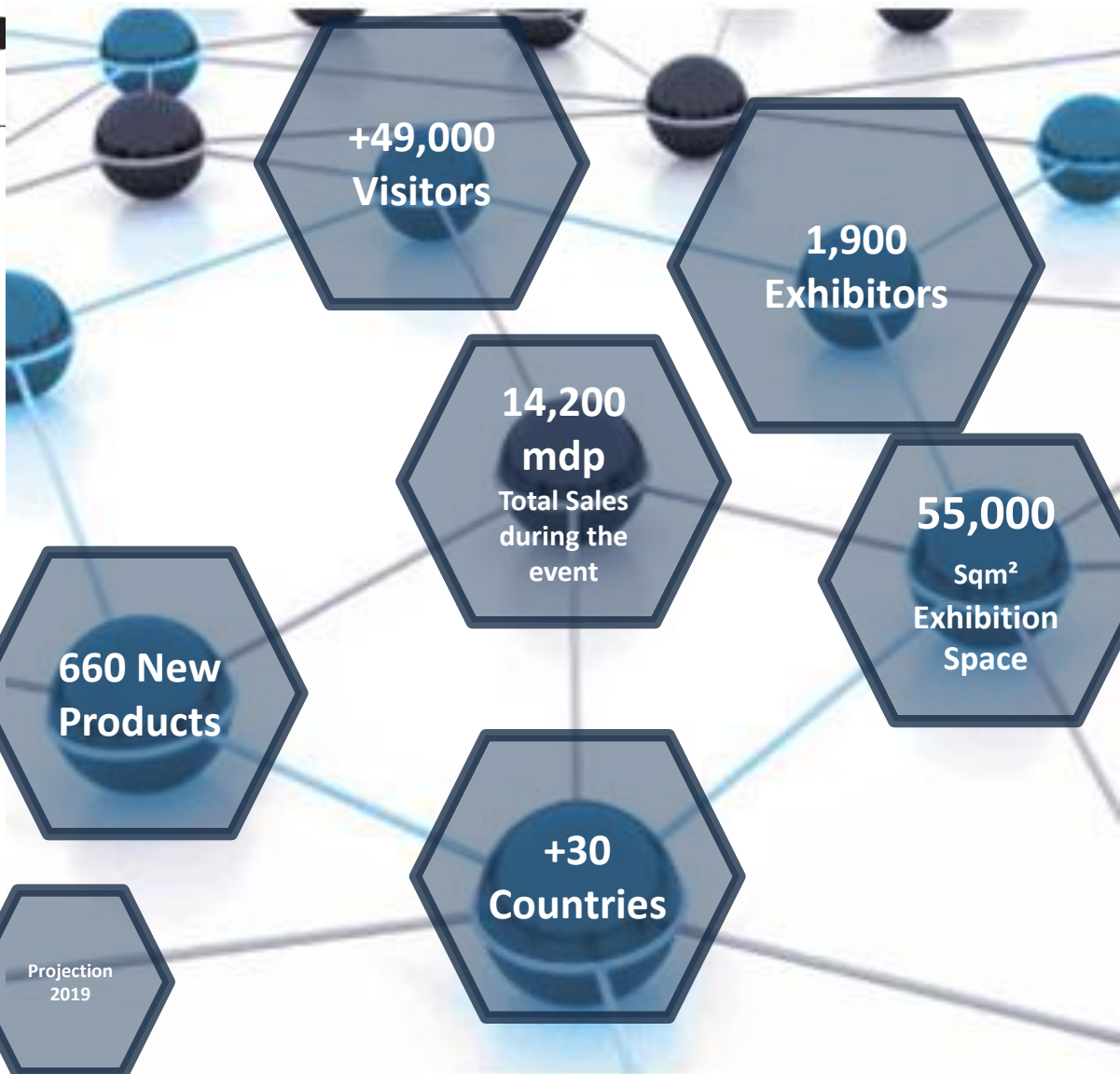
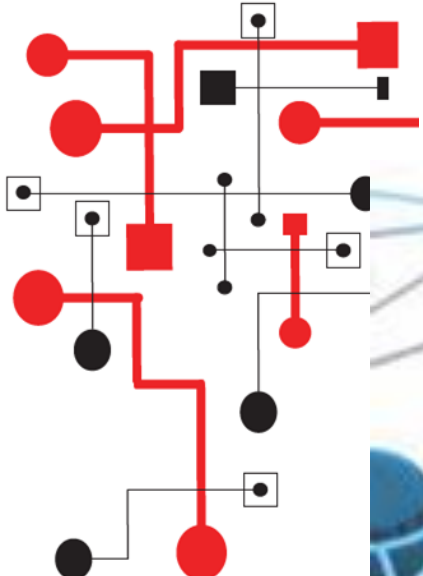
**36th Edition  
The Business Show**



**International Business  
Network**

More than 49,000 attendees






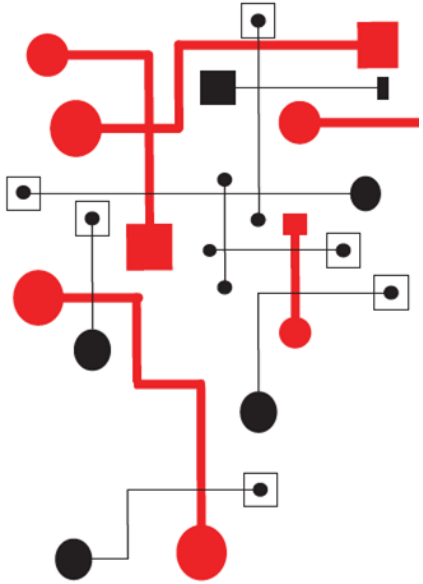
## Visitors by Category

+49,000  
Attendees

- 
- Bar
  - Meat Boutique
  - Fast Food
  - Restaurant Chains
  - Cafetería
  - Pubs
  - Catering
  - Chefs
  - Price Clubs
  - Industrial Canteens

- Convenience Stores
- Department Stores
- Distributors
- Schools
- Foodservice
- Hotes & Resorts
- Importers
- Institutions
- Wholesalers
- Bakeries & Pastry Shops

- Restaurants
  - Specialty Restaurants
  - Supermarkets
  - Organic Stores
  - Natural Grocers Shop
  - Seafood Stores
  - Wine Stores
  - Specialized Stores
  - Online Stores
  - Pharmacy
  - Others
- 



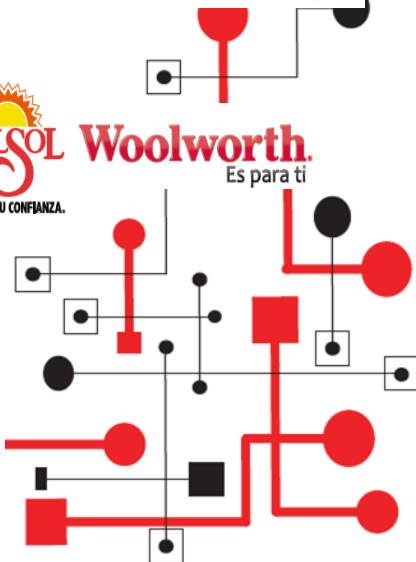
Antad's Members in the Exhibition Floor

+49,000 Attendees

UNIQUE in the world



Some Associates to ANTAD have purchasing office in the exhibition floor.



# World Attendance

+49,000  
Attendees

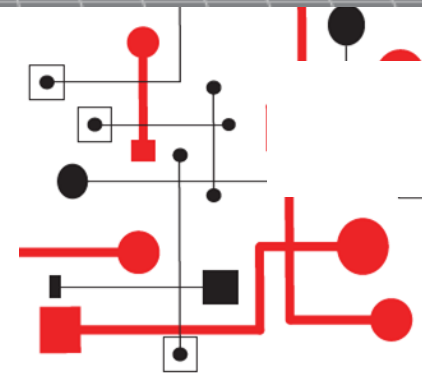
United States  
Canada

Germany Latvia  
Spain Poland  
France Portugal  
Greece United  
Italy Kingdom

China Indonesia  
South Thailand  
Korea Taiwan  
India Turkey

Sudan

Argentina Guyana  
Brazil Honduras  
Chile Panamá  
Colombia Perú  
Ecuador Puerto  
Guatemala Rico  
Uruguay





# Salón Jalisco

## Exhibition Floor plan

Mercancías Generales  
General Merchandise

Alimentos y Bebidas  
NACIONAL  
National Food & Beverages

Alimentos y Bebidas  
INTERNACIONAL  
International Food & Beverages

Mobiliario y Equipamiento  
Furniture & Equipment

Salud, Higiene y Cuidado Personal  
Health, Wellness and Healthcare



# Salón Internacional

Programa de Conferencias  
Salón de Eventos

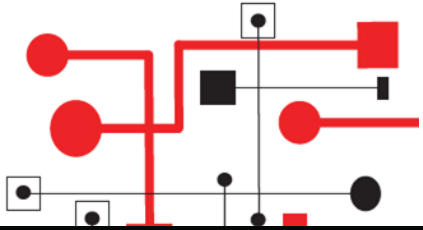
Foro Expo

tasting  
Cooking Experience

2020 Retail Tech

Tecnología  
Technology

Entrada Salida Entrada

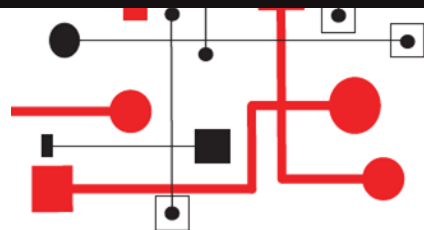


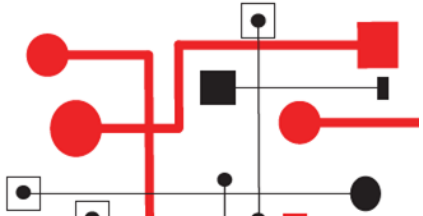
# Integrating the Food Sector

*El Sabor de los Negocios*  
**FOOD CONNECTIONS**



Culinary demonstrations that bring together a unique experience for the food chain professionals.



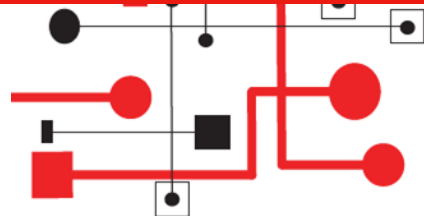


# Approaching Innovation

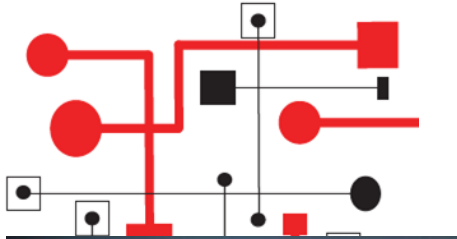
The Workshop Forum will highlight the latest innovations on research, strategies, best practice and new concepts in Marketing, Advertising and trends that encourage consumer's purchasing decision and how the products influence it .



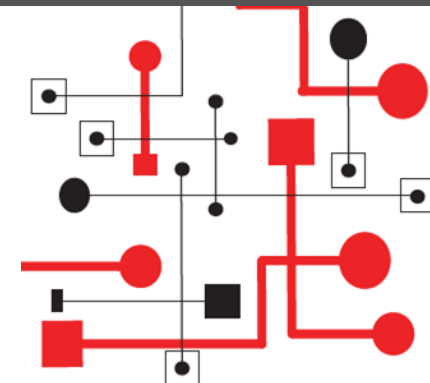
**MEDIA SNAPSHOT**  
INNOVACION. TENDENCIAS Y ESTRATEGIA



# Technology in Retail



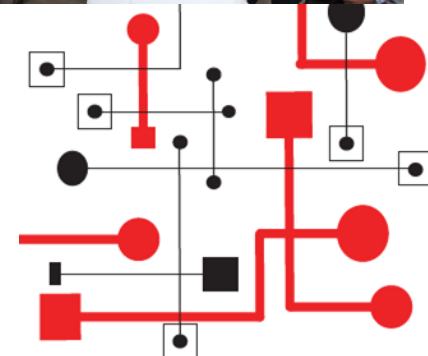
In this forum you will be able to show and experience the latest digital trends and highlights in solutions for the Retail Industry, showcasing business security with the latest technology advancements.



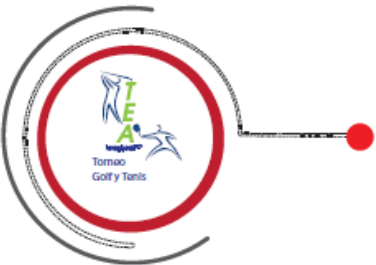
# Exhibition Business Floor



# Other Activities



# Networking





## OFICINAS MÉXICO

México, CDMX.  
Tel. +52 (55) 5580-9900

Manuel Alvarez  
Gerente de Convención  
malvarez@antad.org.mx

## ASESORES COMERCIALES

Claudia Enriquez Ext.214  
cenriquez@antad.org.mx

Beatriz Amezcua Ext.218  
bamezcua@antad.org.mx

Ricardo Cobos Ext. 217  
rcobos@antad.org.mx

Ruben Rivera Ext. 213  
rrivera@antad.org.mx

Samuel Galindo Ext. 255  
sgalindo@antad.org.mx

Shayuri Olvera Ext. 216  
solvera@antad.org.mx

## ANTAD ARGENTINA

Buenos Aires  
Eduardo Bocado  
Te. +54 (11) 4744 4757  
ebocado@yahoo.com.ar



## ALIMENTARIA EXHIBITIONS

Europa, Asia, Sur y Centroamérica  
para Expositores de  
Alimentos y Bebidas

## ASESORES COMERCIALES ESPAÑA

Alessio Cessari  
Tel. +34 93 553 1083  
accessari@alimentaria.com

Albert Lazaro  
Tel. +34 93 452 0726  
alazaro@alimentaria.com

Isabela Wanderley  
Tel. +34 93 452 1131  
iwanderley@alimentaria.com

## INTERNACIONAL

Vasco Stumbov  
+34 93 553 1086  
vsstumbov@alimentaria.com

Silvia Araiko  
+34 93 552 0658  
saraiko@alimentaria.com

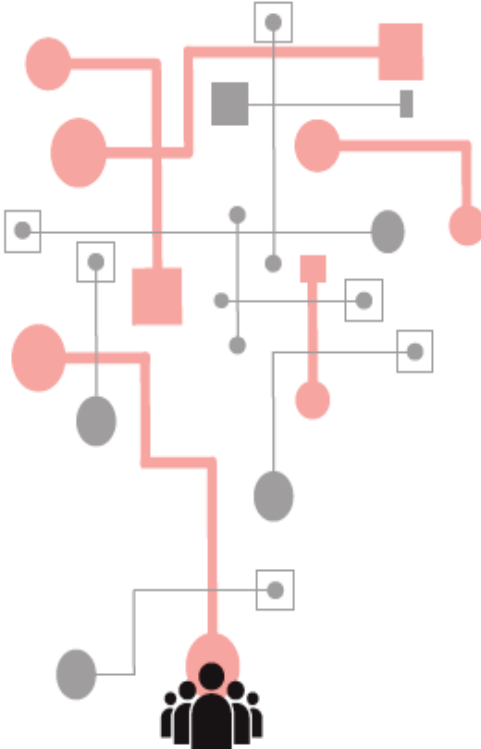


## ANTAD Compradores USA

Mentone, California  
VillaTrading Company  
Armando Villagomez  
Te. 001 909 991 6800  
avillagomez@antad.net

## COMPRADORES NO ASOCIADOS

compradoresna@antad.net  
Tel. +52 (55) 5580 9900 EXT. 240



## Oficina GUADALAJARA

Gdl., Jalisco  
Tel. +52 (33) 3121-4577

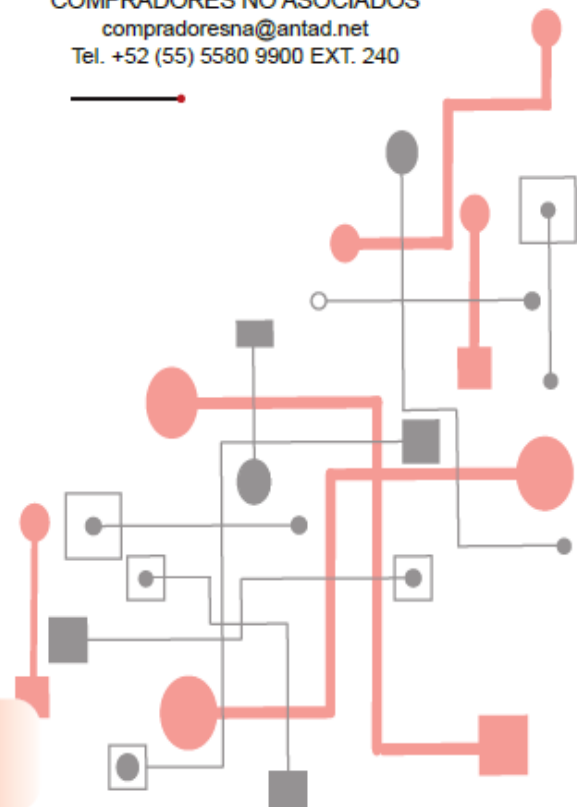
## ASESOR COMERCIAL



Miriam Madrigal  
mmadrigal@antad.org.mx

## RELACIONES PUBLICAS

Cristina Gutierrez-Relaciones Públicas  
cgutierrez@antad.net



www.expoantad.net